

Required Drawings for Freestanding Signs – For Zoning Review

- Even if a permit is not required, an elevation drawing, as well as a site plan of the proposed sign is required to be submitted – for zoning review.
- If a permit is required, drawings may need to be professionally produced to scale.
- If a permit is required, and also wind-load engineering, the submitted documents must also include engineering, signed and sealed by a Florida Licensed Engineer, showing the structure meeting Florida Building Code wind-loads for Suwannee County.

Zoning review documents must include: (See examples on the next pages)

1. A site plan of the property (aerial and street view photos marked up with permanent black marker are acceptable), showing the proposed location and orientation of the sign structure. Additional measurements may be needed on the site plan showing distances to property lines, and or distances to driveways and street intersections, as applicable.
2. A front and side elevation drawing of the sign, to include:
 - a. The type (what it will look like and what it is made out of) – single post, double post, monument, etc.; wood or metal posts or poles/pipes, what size posts, what the cabinet material will be made out of, how will it be attached to the pole or posts, etc.
 - b. The overall height of the sign from the ground to the top-most portion.
 - c. The spacing between posts.
 - d. The depth of the structure (side elevation).
 - e. The area of the copy panel (height, width, depth).
 - f. The distance from the bottom of the copy panel to the ground.
 - g. How will support poles or posts be secured to ground (what depth, footer, compacted earth or cement poured in hole, etc.)
3. A graphic from the sign company, etc., showing what the copy panel, etc. will look like (colors, lettering, logos, etc.)

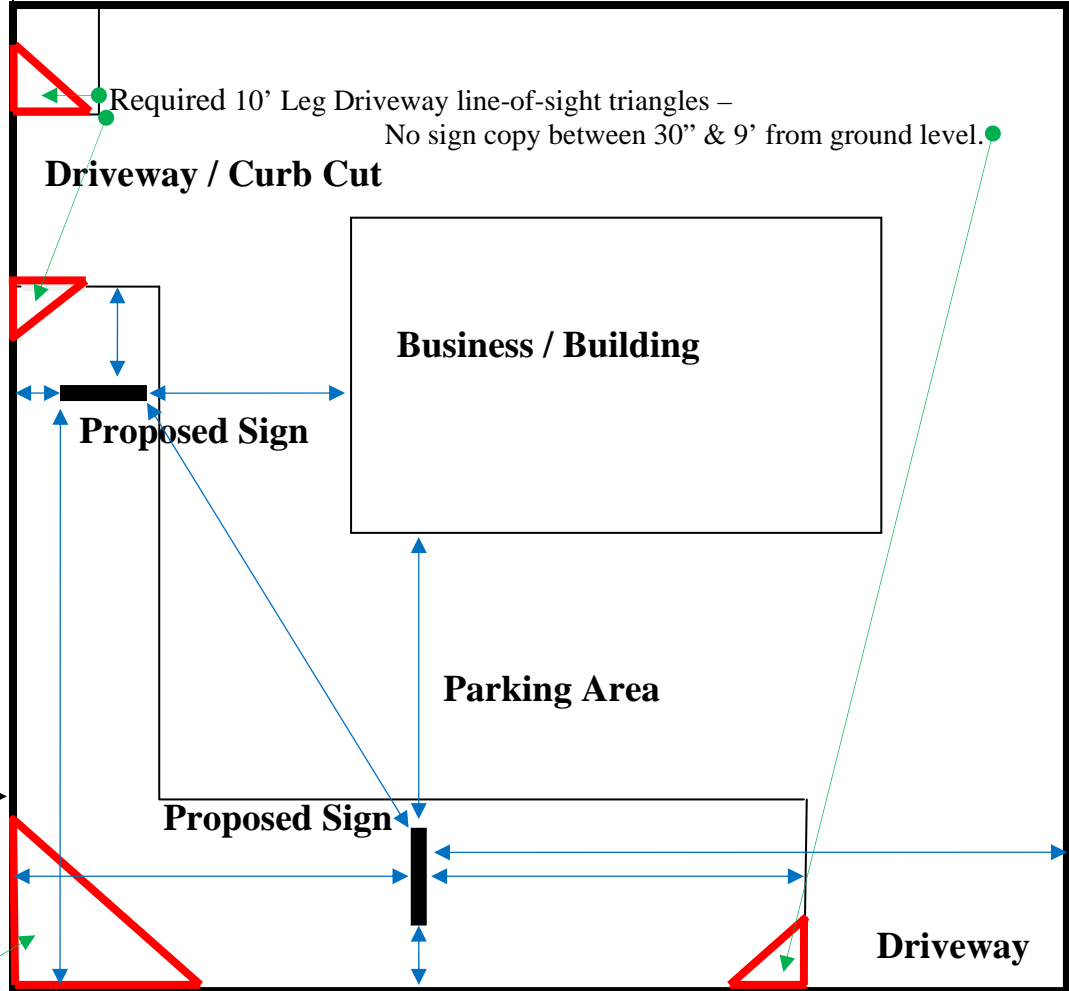
TYPICAL SITE PLAN FOR FREESTANDING SIGN

(Must be to scale, with scale legend and north arrow, etc.)

(A copy of a survey with notes/details drawn in will also suffice.)

Required Setbacks: Must be shown to: street property lines, side or rear property lines, curb cut/driveways, all buildings, and other signs.

Property Line



Required 10' Leg Driveway line-of-sight triangles –
No sign copy between 30" & 9' from ground level.

Driveway / Curb Cut

Business / Building

Proposed Sign

Parking Area

Proposed Sign

Driveway

1 ST Ave

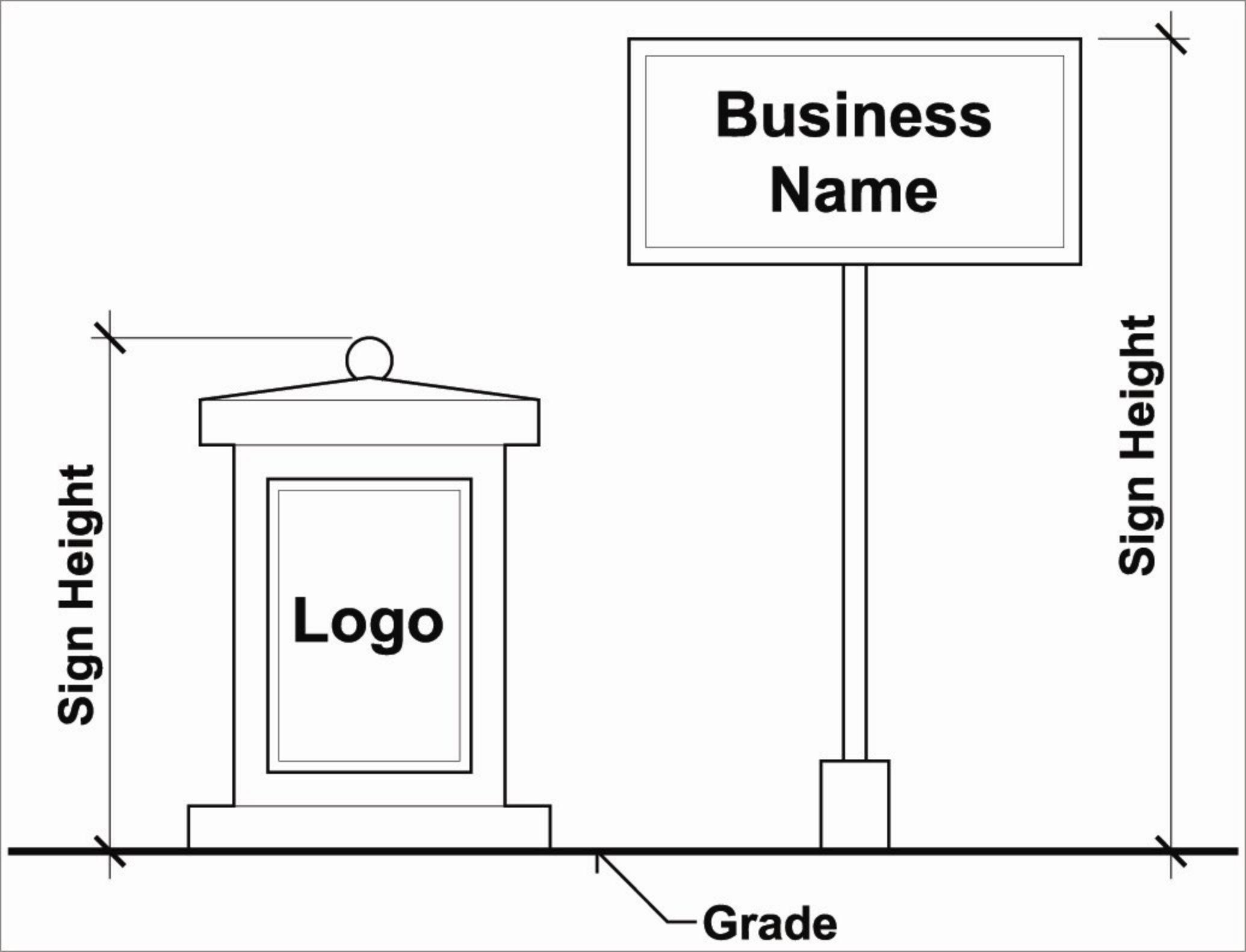
ROW

Required 25' Leg Street ROW line-of-sight triangles – No sign copy between 30" & 9' from ground level.

2 ND Street



1" = 40', etc.



Sign Height

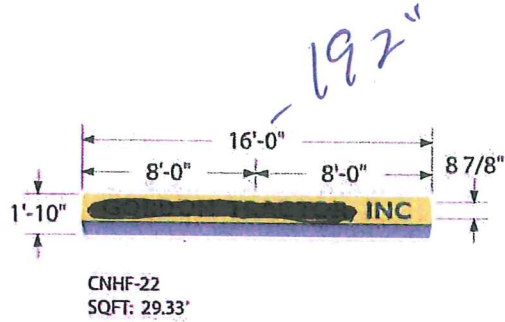
Logo

**Business
Name**

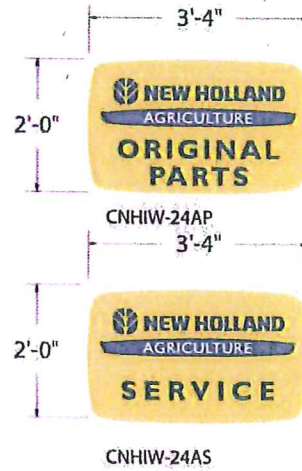
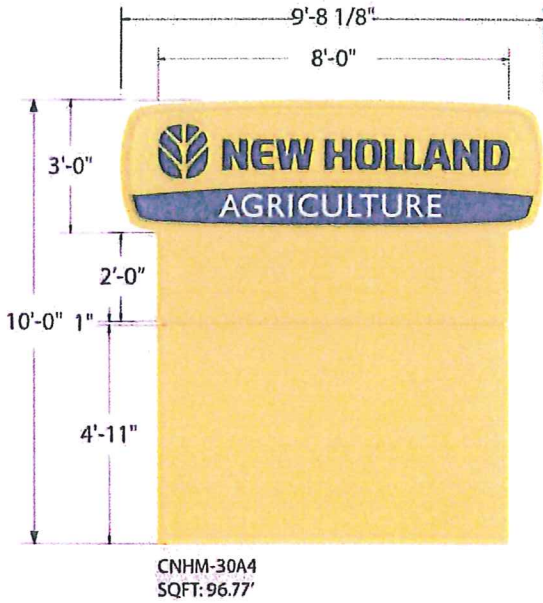
Sign Height

Grade

Master Layout Page:

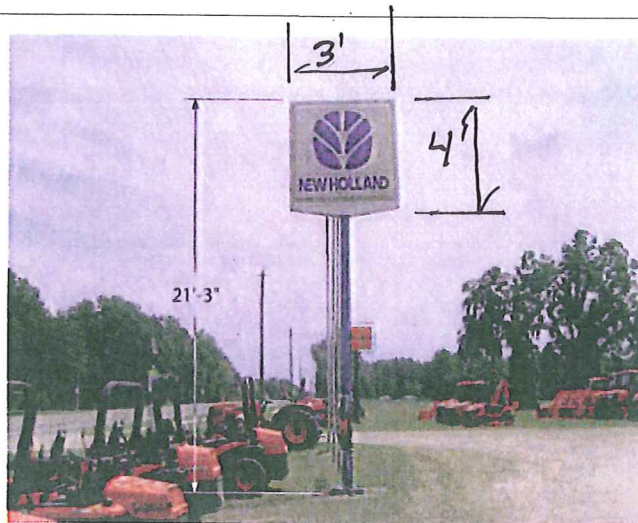


8825 = 11.83 sq.



Existing Signage

Sign #: 1
Sign Type: Monument
Overall Height: 21' 3"
Sign Height: 6' 2"
Sign Width: 6' 0.5"
Square Foot: 37.26
Face Material: Plex
Graphics Material: Vinyl
Surface Material: N/A
Illuminated: Yes
Electrical: Electrical Power Within 8ft
Footing Reuse?: No
Pole Size: 6"x6"
Voltage/ # Circuits:
Hgt to Sign Bottom: 15' 1"
Double Face: Yes
Photo #: 13



Notes:

Proposed Signage

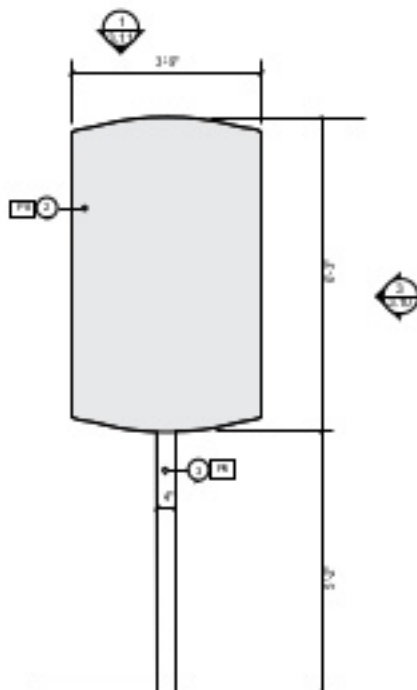
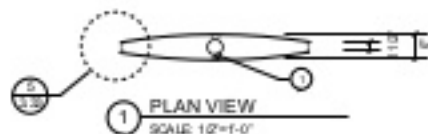
Action: RR
Sign Type: CNHM--30A4
Description: M30 3' x 9'8" @ 10' OAH
Custom (Y/N): Yes
Overall Height: 10'
Height: 3'-0"
Width: 9'-8 1/8"
Sq. Ft.: 96.0'
Illuminated: Yes

General Notes

Remove old pole to grade, footing to remain.
Move new footings 5' to 6' to miss old footing.
Install new pylon. Hook up to existing electric if it is within 6' and code compliant.
NOTE: CODE ALLOWS MAX HEIGHT OF 15'



Patch & Repair Notes:



- 1 1" x 2" (Steel) 1/2 inch max L, welded end, to be on top of post.
- 2 12" (Steel) square section, 1/2 inch max L, welded end, to be on side of post.
- 3 1" x 2" (Aluminum) 1/2 inch max L, welded end, to be on top of 1/2 inch square post. Same size to be at end of the bottom square section.
- 4 18" (Steel) 1/2 inch max L, welded end, to be on side of 1/2 inch square post. Same size to be at end of the bottom square section.

NOTE: In isolate all a & notes on the side of the related to with a side or quarter or in words can be shown can get a look at sign.



WAYFIELD CREATIVE

1000 Peachtree County Road, Suite 100
Marietta, GA 30066
Phone: 770.429.1111
www.wayfieldcreative.com

Prepared by:

Caribad Main Street

Project:

City of Caribad
Wayfinding Program
Bid Documents

Sheet Number:

Section 3
Drawings
Structure
V6

© 2008 Wayfield Creative, Inc. All rights reserved. This drawing is the property of Wayfield Creative, Inc. No portion or derivative of this drawing is permitted and copies for use or release without the written or oral approval of the Board of Directors of Wayfield Creative, Inc. Any use of this drawing without the prior written consent of Wayfield Creative, Inc. is prohibited. All drawings and specifications and associated technical drawings shall be used as a guide only. It is the responsibility of the contractor to verify all dimensions, quantities, conditions, and materials shown on this drawing. All drawings and specifications shall be used as a guide only. It is the responsibility of the contractor to verify all dimensions, quantities, conditions, and materials shown on this drawing. All drawings and specifications shall be used as a guide only. It is the responsibility of the contractor to verify all dimensions, quantities, conditions, and materials shown on this drawing.

Project Number:

CB1001

Page:

3.10

Date:

November 2008

DRAWING EXAMPLES FOR ILLUSTRATIVE PURPOSES ONLY

Minimum Requirements
for sign elements:

Moment of Inertia:

$$I_x = 0.134 \text{ in}^4$$

$$I_y = 0.134 \text{ in}^4$$

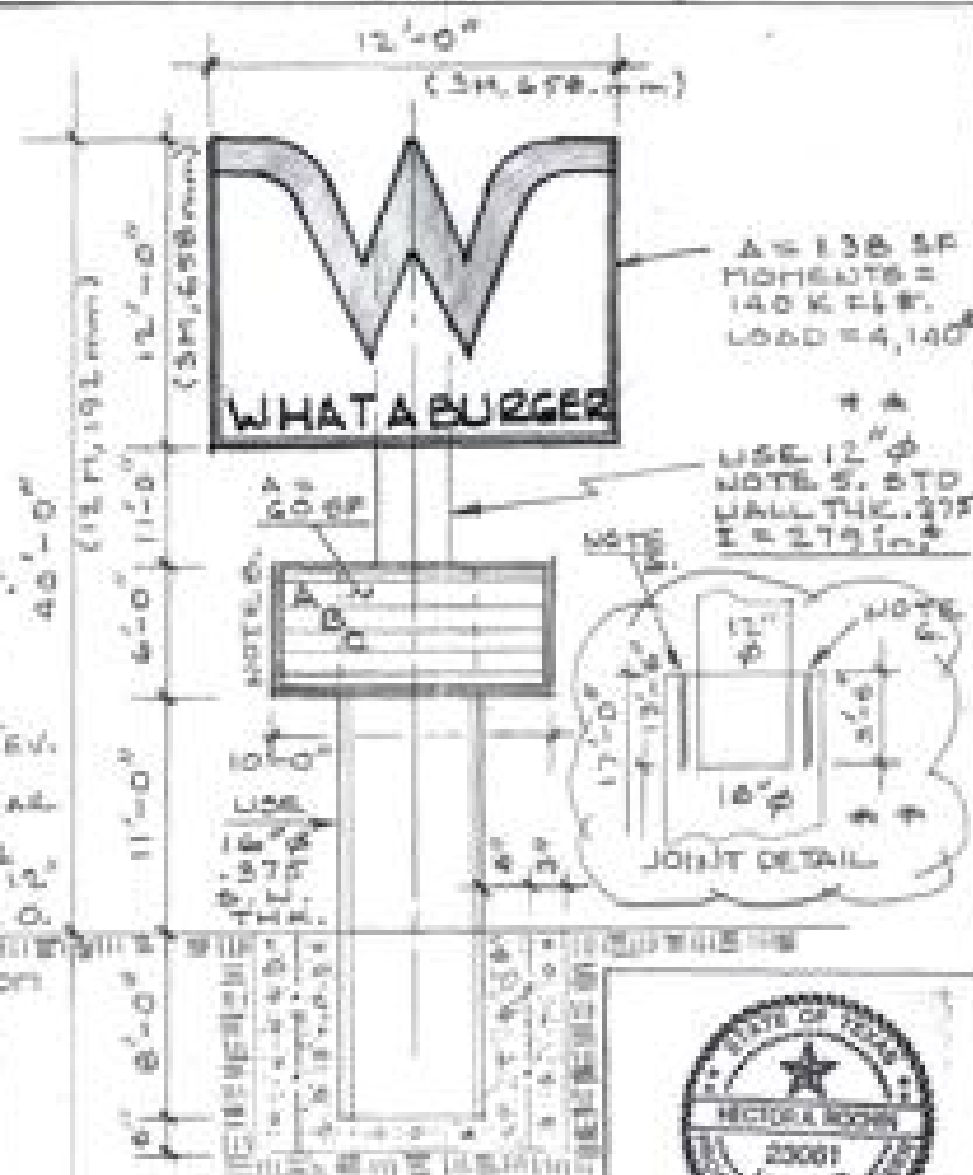
$$I_{xy}$$

Section Modulus = 0.130

Radius of Gyration = 0.44

NOTES:

1. Wind load design = 300/ft
2. See table above for minimum sign sections.
3. Maximum moments for this sign = 163,200 (ft. #).
4. See 10002 concrete for sign footings. PROVIDE 9" JACKET.
5. Square tubing is optional for signs it shows.
6. USE SIGMA PIPE, STD. SPACERS FROM 13'-6" - 17'-0".
7. PIPE JOINT AT 17'-0" ELEV. 12" PIPE BEGINS AT 12'-6" ELEV.
8. MOMENTS = 25,200 (ft. #).
9. MAKE CAGE FROM #3 RE-BAR SPACE 12" C-C.
10. FOR $R_c = 24 \text{ KSI}$, ALLOWABLE CONCENTRIC LOAD = 275 FOR 12" PIPE; FOR 12" $R_c = 304 \text{ HRS}$ L.C.
11. FOR 12" = 2 = 173, $r = 4.88$
12. TAPERED FOR AS SHOWN. USE 12" TO 17' ELEV. USE 12" FROM 17'-6" TO 40' OR END.



A = 138 SF
MOMENTS =
140 K.F.T.#.
LOAD = 4,140

USE 12" ϕ
NOTE 5. STD
CALL THE 375
I = 279 in⁴

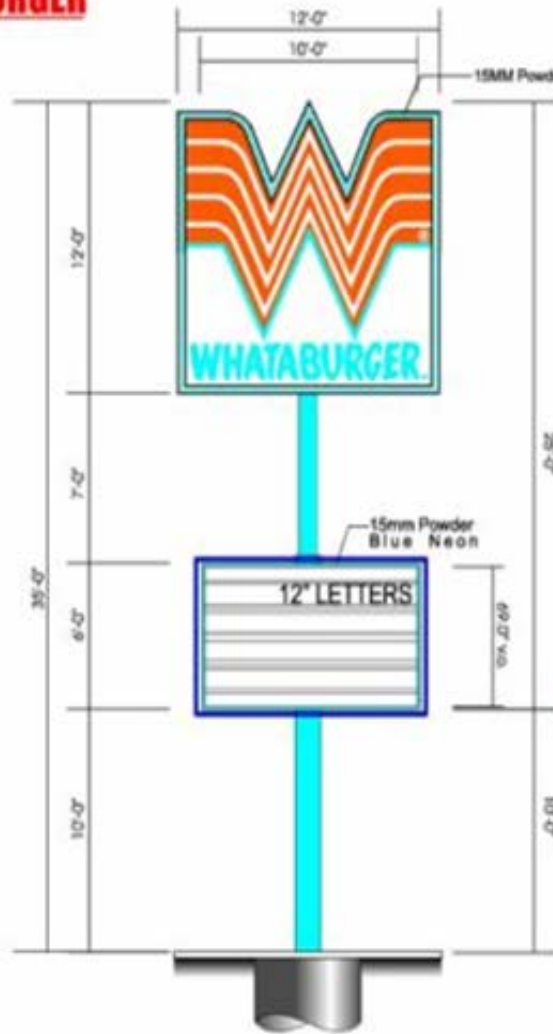
JOINT DETAIL



FOR: Bill Watson
Signs Manufacturing
4050 Mint Way
Dallas, Texas 75236
Fax 214/339-9987 214/339-3227
Scale: None Date: 5/10/02
Job. No 1702- Koch Engineering
817/285-7590
103 E. Perote 1189
Wurst, Texas 76033

WHATABURGER

FINAL DRAWING



15MM Powder Blue Neon around cabinet

Manufacture and install one (1) D/F internally illuminated 12'-0" x 12'-0" Pylon Sign Cabinet that reads the "W" logo and "WHATABURGER".

Materials & Colors

Faces: White Flex Face
Cabinet: D/F pole cabinet paint to be Whataburger's 166-D-6-Blue.
"W" to be 3630-44 Orange and white with 3630-167 Bright Blue vinyl "Whataburger".
Retainer: 4" retainer paint to be 166-D-6-Blue.
Frame: Angle iron
Illumination: internally illuminated with fluorescent lamps

12'-0"

10'-0"

SCALE 3/16"=1'-0"

PLYON ELEVATION
30.0' TOTAL HGT.

15mm Powder Blue Neon

12" LETTERS

Manufacture and install one (1) D/F internally illuminated 6'-0" x 10'-0" reader board sign.

Materials & Colors for Reader Board

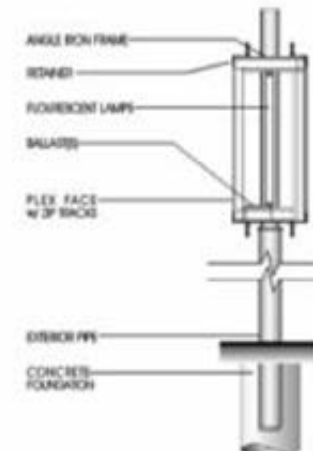
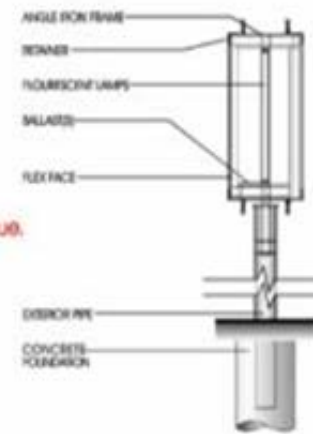
Faces: White Plex face with Zip Tracks for 12" Easy-to-Change letters.
Cabinet: Pole sign cabinet paint to match 166-D-6-Blue.
Retainer: 1 1/2" 166-D-6-Blue retainer
Frame: Angle iron
Illumination: Internally illuminated with Fluorescent Lamps and 15mm Powder Blue Neon.

7'-0"

6'-0"

10'-0"

10'-0"



WHATABURGER
PRELIMINARY 11-03-03

Underwriters Laboratories Inc.®

JOB NAME: WHATABURGER
ADDRESS: 6128 Wichita Hwy
CITY: Pensacola
STATE: Florida

© 2004
ALL RIGHTS RESERVED. UNDERWRITERS LABORATORIES INC. IS A REGISTERED SERVICE MARK OF UL HOLDINGS INC. IN THE U.S. AND OTHER COUNTRIES. ALL OTHER RIGHTS RESERVED.

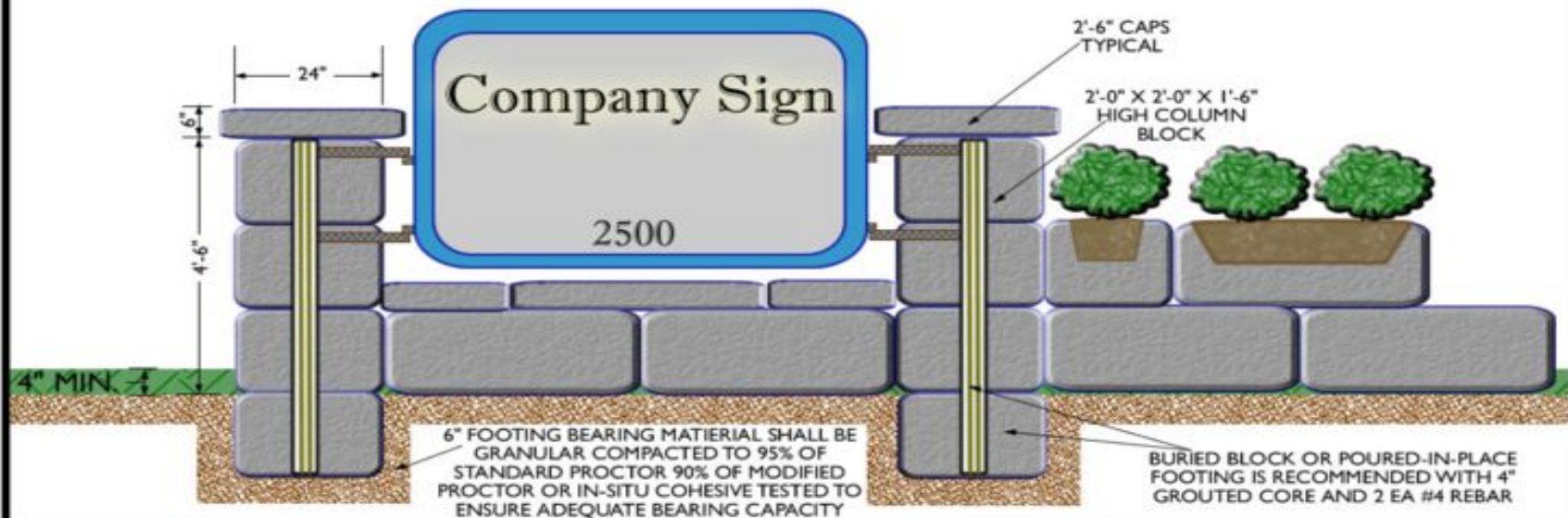
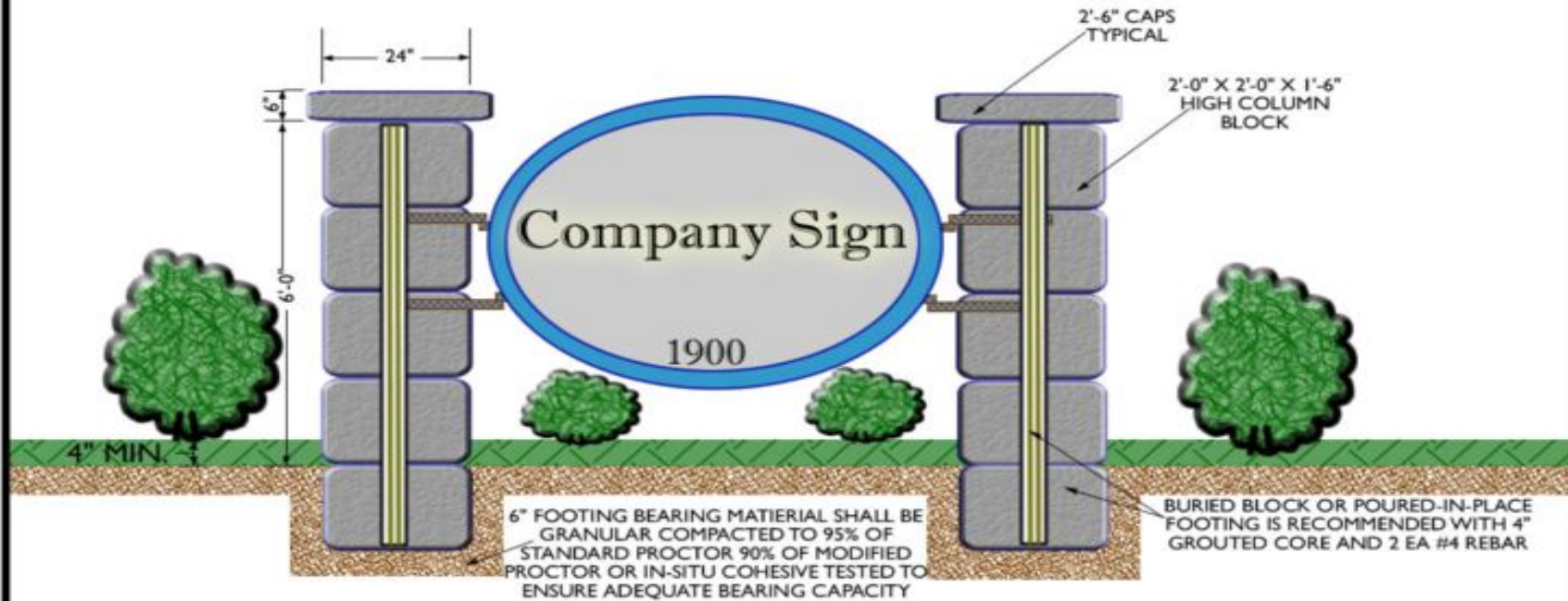


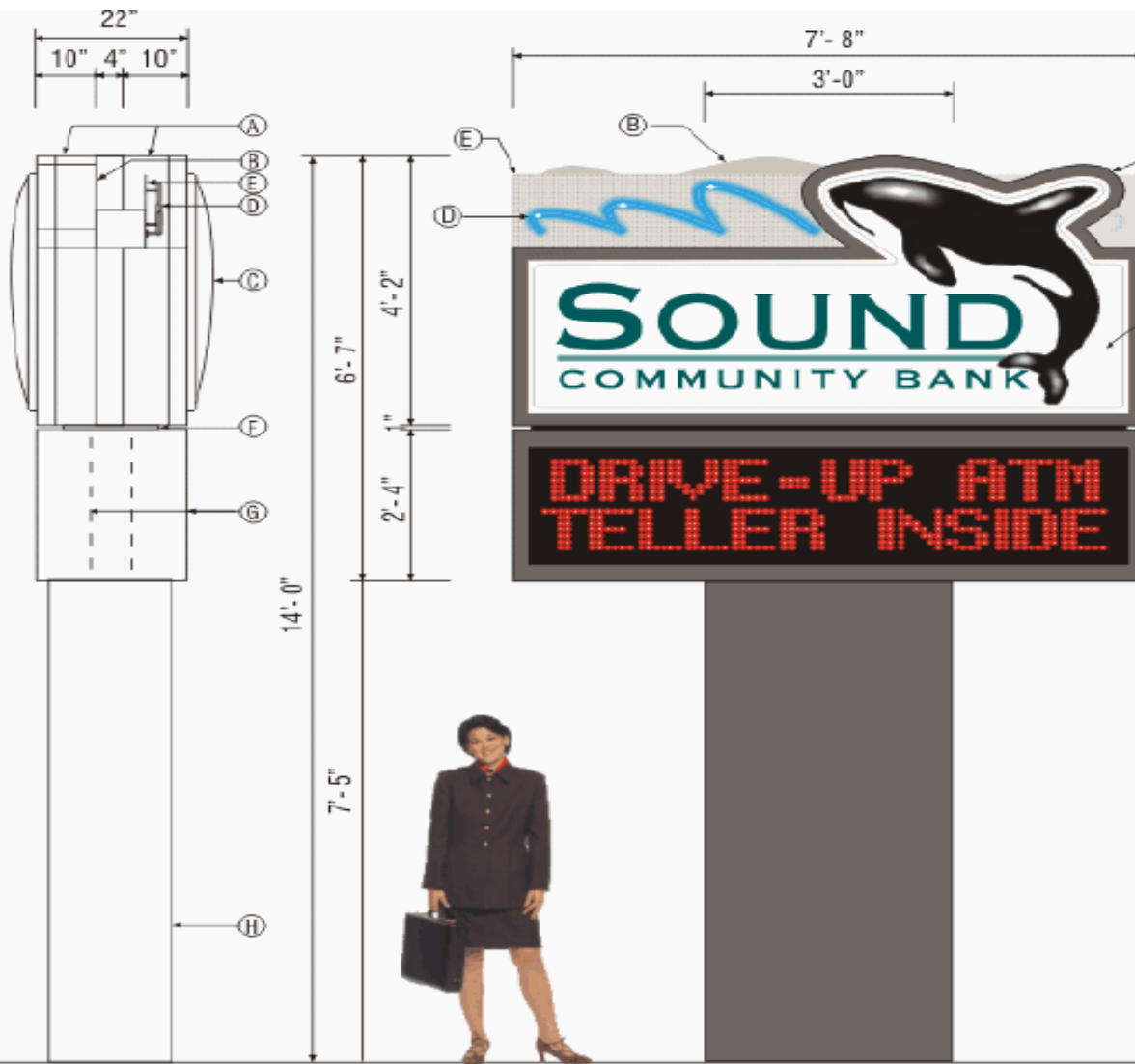
ALL APPLICABLE PRIMARY WIRING AND CONTROLS TO SIGN WILL BE PROVIDED BY THE CUSTOMER

SALESMAN: Bill Walker
ARTIST: Sam Walker
DATE: 11-03-03
DWGR: 03-1100

PAGE 4

TYPICAL SIGN DETAILS



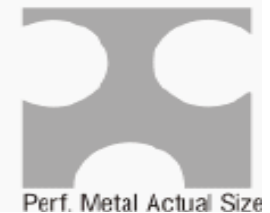
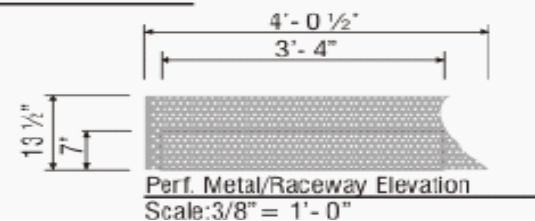


Manufacture and install one (1) double-faced internally illuminated pylon display with an LED Monochromatic message center.

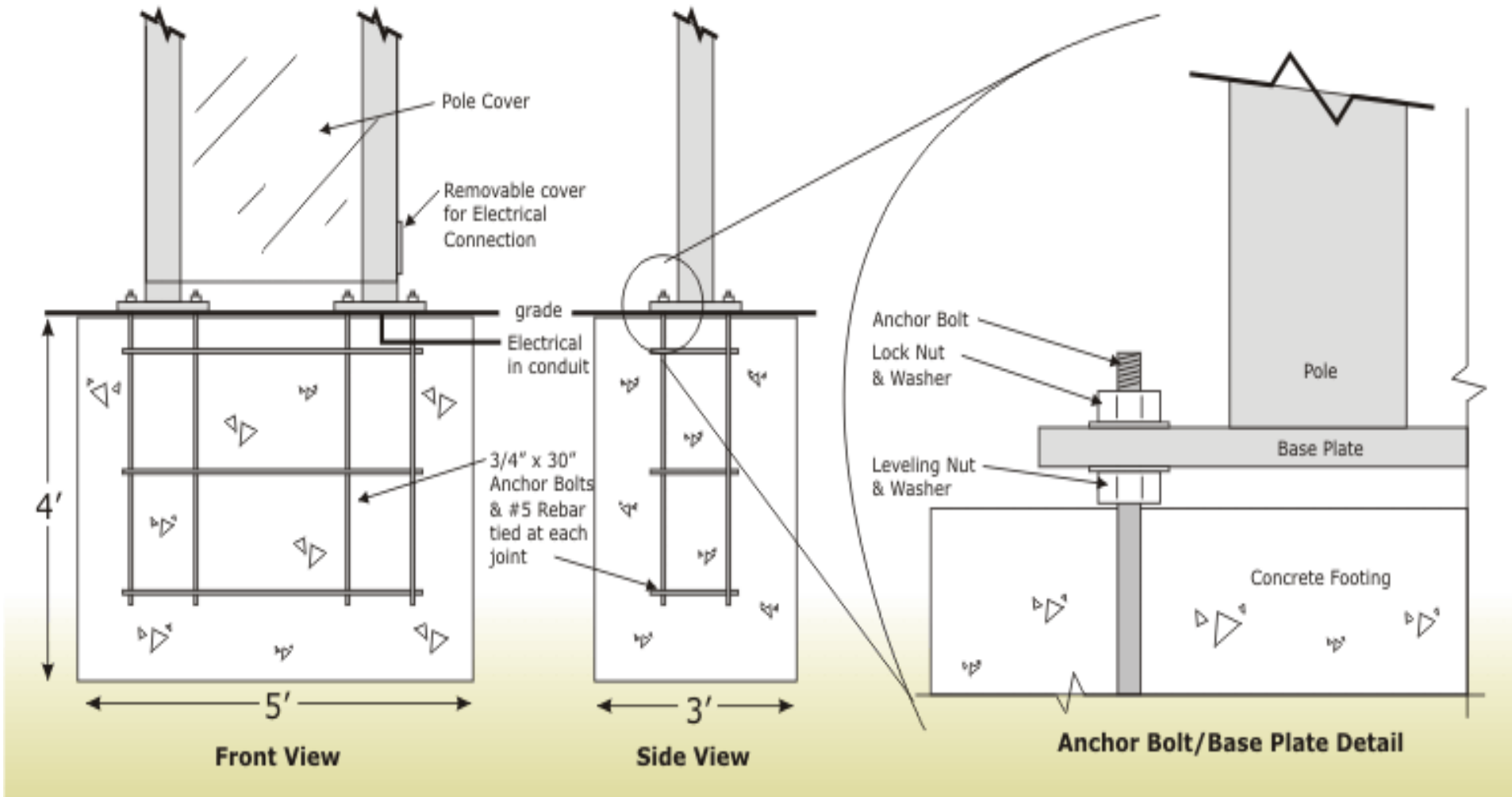
- Ⓐ Main cabinets are two (2) custom shaped aluminum cabinets back to back on a single pylon with 2" bottom-hinged retainers painted Dark Bronze. No side cladding.
- Ⓑ Note: Back part of cabinet exposed to be painted Warm Grey 2.
- Ⓒ Clear Lexan faces are formed, second surface decorated, with an embossed orca. Orca is painted Black and White. "SOUND COMMUNITY BANK" letters are to match PMS #3292. Graphic bar between copy is to match 50% PMS #3292.
- Ⓓ Double-sided "SPLASH" neo-Blue neon is mounted to a .063 aluminum perforated metal background with 1/2" round staggered holes spaced 1 1/16", painted Warm Grey 2.
- Ⓔ Perf metal background mounted to 7" x 7" aluminum raceways mounted to top of primary cabinets and painted to match Warm Grey 3.
- Ⓕ 2" aluminum reveal painted Dark Bronze with closed top.
- Ⓖ Two (2) back to back AF-34mm Monochrome Outdoor 16 X 64 full matrix Red LED message centers, with aluminum cladding to close up. Cabinets Dark Bronze.
- Ⓗ 18" x 36" Aluminum pole cover painted Dark Bronze.

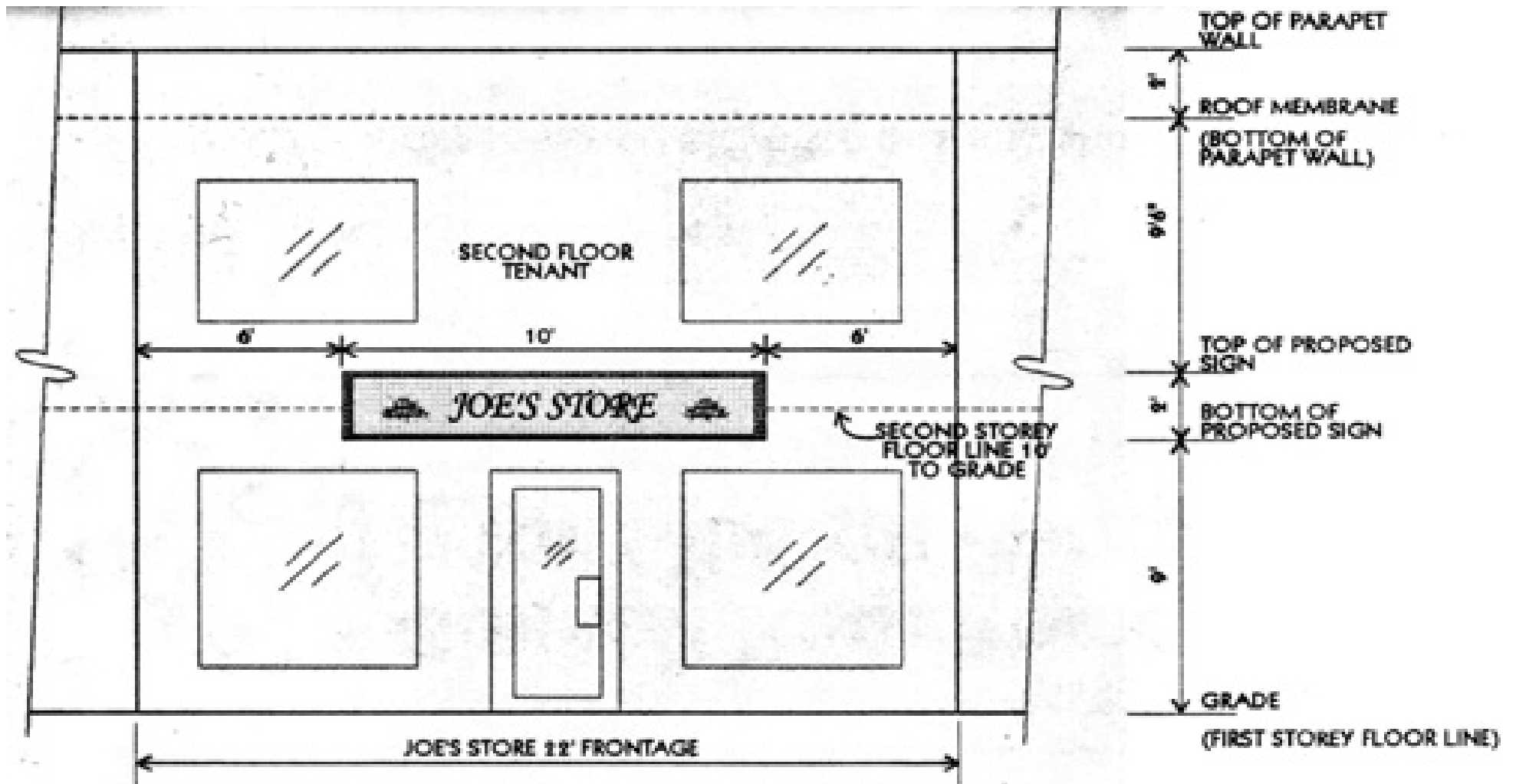
Side Elevation
Scale: 3/8" = 1'-0"

Front Elevation
Scale: 3/8" = 1'-0"



**This is not an engineered drawing - For representational purposes only
Foundation engineering should be reviewed by local authorities due to varying soil & wind load conditions.
Local frost line requirements may supercede depth dimension.**





NORTH ELEVATION

SCALE- 1/4" = 1'0"



Open Pan Channel letters w/remotes.
 Green faces and returns w/red vinyl letters
 inside OPC letters and white neon.
 Illuminated S/F Oval cabinet w/digital print.



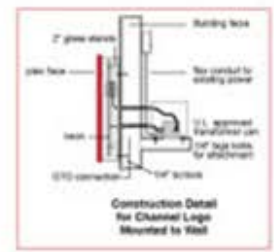
SCALE: 3/8" = 1'



Sign B



Sign B



PROJECT #	DATE	SCALE	1" = 1'	1" = 1'	1" = 1'
OWNER	DESIGNER	CHECKED	DATE	DATE	DATE
PROJECT ADDRESS	CITY	STATE	ZIP	PROJECT NO.	DATE
<p> <input type="checkbox"/> FMS 400C <input type="checkbox"/> Standard Green Coated <input type="checkbox"/> FMS 347C <input type="checkbox"/> Standard Red Coated <input type="checkbox"/> FMS WHIC <input type="checkbox"/> FMS Black </p>		<p> <input type="checkbox"/> 1" = 1' <input checked="" type="checkbox"/> 1" = 1' <input type="checkbox"/> 1" = 1' </p>			



EXAMPLE OF SIGN SITE PLAN

